

DAT/EM Systems International

8240 Sandlewood Place, Suite 101
 Anchorage, AK 99507-3122
 907-522-3681
 www.datem.com

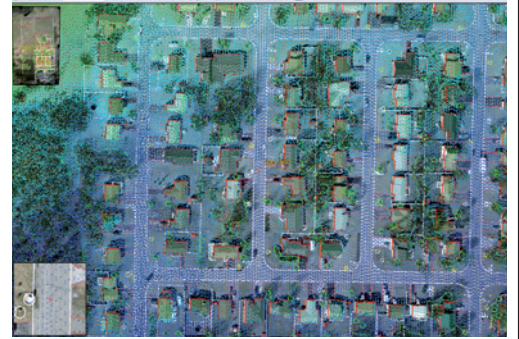


Based in Anchorage, Alaska, DAT/EM Systems International is a highly technical company that has been developing digital mapping and photogrammetric software and hardware since 1987. Currently, DAT/EM serves more than 500 photogrammetric firms, engineering companies, government and nongovernmental agencies in more than 70 countries worldwide.

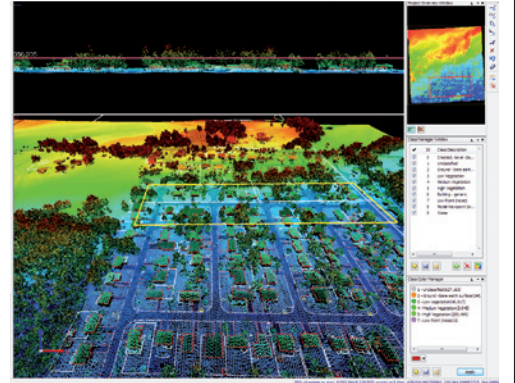
Summit Evolution is a full-featured digital photogrammetric system designed to be powerful, flexible and customizable to your needs. The Summit Evolution system allows for easy management of multiple model images along with their appropriate camera and control files in a project-based environment. The system makes mapping easier and provides precise data collection with fast, vivid 3-D stereo viewing along with other DAT/EM software, including Landscape, Capture, Contour Creator, MapEditor, Airfield3D and Ortho+Mosaic.

Landscape is an essential software tool for 3-D viewing and editing large terrain point sets such as LiDAR files. The software provides an easy-to-understand view into the world of 3-D LiDAR points, providing tools for modifying the points and generating new data based on the points. Landscape's feature collection tools provide the ability to digitize 3-D vectors using Capture.

With an ever-changing technological climate, DAT/EM Systems has stayed committed to continued development, execution and export of intellectual property for digital mapping applications. We recognize the importance of evolving with our users. Clients are an integral part of the development process, and we welcome suggestions and feature requests.



Summit Evolution presents photogrammetric-quality 3-D images while compiling directly into AutoCAD, MicroStation or ArcGIS.



Landscape provides an easy-to-understand view into the world of 3-D LiDAR points.